

**THE HOPE LIES WITH QUALITY**



**Every investment will be rewarded adequately by high cost-performance**

**SHENZHEN HOPESTAR SCI-TECH CO.,LTD**

**深圳市希之望科技有限公司**

**SHENZHEN HOPESTAR SCI-TECH CO.,LTD**

公司地址: 深圳市龙华新区布龙路泉森启创园E栋

E Building, Quansen Industrial Park, Bulong Road, Longhua New District, Shenzhen.China

电话 Tel: 86-0755-82579059

传真 Fax: 886-0755-82579239

邮箱 Mail: hope20@cnhopestar.com



# Company Profile

## 公司简介



Established in 2002, Shenzhen Hopestar Sci-tech Co., Ltd ( hereinafter referred to as Hopestar) is a leading company of LCD monitors more in China ,integrating R&D, production and sales.

Hopestar focus on computer , LCD / LED monitors , CCTV monitors , car monitors , all in one PC , touch screen and advertising display . We owned experienced R&D engineers and a professional sales team covers 10,000 square meters factory area . Our products sell to more than 50 countries and regions in the world and get a high reputation from our customers, The annual production capacity is over 3000,000 units . All of our products passed by CE , ROHS , FCC , CCC , and our factory approved ISO 9001 certificates .

The mission of Hopestar is "Customer is the first", we aim to be a famous enterprise who offers you professional service and high quality products to meet your different demands and get a win-win cooperation .

Office environment

# Company Profile

Strength factory





# 产品目录

## Product list

LCD/LED Monitor Series 01-04

LCD Touch Monitor Series 05-06

LCD AD Display Series 07-08

Professional CCTV Monitor 09-11

Touch All-in-one PC Series 12-13

Industrial grade embed monitor 14-16

Product Certification 17





HOP3501

## 35" 21:9 Ultra Wide WQHD IPS Curved LED Monitor



21: 9 widescreen



3440x1440



Exquisite curvature

1. Versatility and Performance with Screen Split
2. Professional Colour Grading IPS Display, The colour reproduction is enhanced by the IPS display.
3. The combination of 3440x1440 WQHD resolution and IPS display brings you the utmost immersion with a wider field of view.
4. 21:9 Curved Monitor with WQHD (3440x1440) wide screen real-estate ideal for using various programs with controlling and monitoring more thumbnails or timelines- simultaneously.

Model	HOP3501
Panel size	35"(21:9)Curved LED monitor
Curvature	R1800
Display area	597.89×336.31(mm <sup>2</sup> )
Standard Resolution	3440x1440
Number of Colors	16.7M
Brightness	300cd/m <sup>2</sup>
Dot pitch	0.303mm
Response time	1ms
View angle	Horizontal:178°,Vertical:178°
Contrase ratio	3000:1
Interface	VGA/HDMI/DVI
Accessories	HDMI cable/Power cable/Instruction book



Model: H240C  
 Panel size: 24" (16:9) LED monitor  
 Display area: 531.4×298.9(mm<sup>2</sup>)  
 StandardResolution: 1920x1080@144HZ  
 Number of Colors: 16.7M  
 Brightness: 350cd/m<sup>2</sup>  
 Dot pitch: 0.248mm  
 Response time: 1ms  
 View angle: Horizontal:176° Vertical:170°  
 Contrase ratio: 1000:1  
 Port: 1\*VGA, 1\*HDMI, 1\*DP, 1\*DC IN  
 Accessories: HDMI cable/Power adapter/Instruction book

Panel size: 31.5"(16:9) Curved LED monitor  
 Display area: 597.89×336.31(mm<sup>2</sup>)  
 Standard Resolution: 1920\*1080@60Hz  
 Number of Colors:16.7M  
 Brightness: 350cd/m<sup>2</sup>  
 Dot pitch: 0.311mm  
 Response time: 5ms  
 View angle: Horizontal:178°,Vertical:178°  
 Contrase ratio: 1000:1  
 Interface: HDMI+DVI+DP port  
 Accessories: VGA Cable/Power adapter/Instruction book



Model: F270W  
 Size: 27" LED  
 Resolution: 1920\*1080  
 Display Ratio: 16:9  
 Contrast ratio: 3000:1  
 Viewing area(mm): 597.89×336.31  
 Pixel(mm): 0.3114\*0.1038  
 View Angle: 178/178  
 Scan Frequency(hz): 60hz/144Hz  
 Respond time(ms): 5ms  
 Brightness(cd/m<sup>2</sup>): ≥250  
 Interface: VGA+DVI+AUDIO





# LCD Monitor series

HOP215U



Model	HOP215U
Panel size	21.5"(16:9)
Curvature	R1800
Display area	477.5×268.9(mm <sup>2</sup> )
Standard Resolution	1920x1080
Number of Colors	16.7M
Brightness	300cd/m <sup>2</sup>
Dot pitch	0.248mm
Response time	5ms
View angle	H:176°V:170°
Contrase ratio	5000000:1
Connector	VGA (HDMI, DVI optional)
Accessories	Power adapter / VGA cable / Audio cable / User's manual

# LCD Monitor series



Model	1703
Panel size	17 inch TFT-LCD
Visual panel size	341.9×274.4(mm <sup>2</sup> )
Standard Resolution	1280x1024 SXGA
Number of Colors	16.2M
Brightness	300cd/m <sup>2</sup>
Response time	5ms
View angle	Horizontal:165°,Vertical:160°
Contrase ratio	1000 : 1
Connector	VGA+HDMI+AV+USB+TV



Model	P185P
Panel size	18.5" LED monitor
Display area	409.8×230.4(mm <sup>2</sup> )
Standard Resolution	1366*768
Number of Colors	16.7M
Brightness	300cd/m <sup>2</sup>
Dot pitch	0.248mm
Response time	5ms
View angle	Horizontal:176°,Vertical:170°
Contrase ratio	1000 : 1
Function	VGA(HDMI,DVI,TV, AV, USB)



Panel size	21.5"(16:9)LED MONITOR
Viewing area	477.5×268.5(mm <sup>2</sup> )
Standard Resolution	1920*1080
Number of Colors	16.7M
Brightness	300cd/m <sup>2</sup>
Response time	5ms
View angle	H:178°, V:178°
Contrase ratio	1000 : 1
Ports	VGA





## Application scope:

Can be used for a variety of occasions, such as: supermarket cash register, ordering, medical machinery, industrial areas.

## Model:1503M

Panel size: 15 inch TFT-LCD Touch Screen Monitor  
 Display area: 304\*228mm  
 Standard Resolution : 1024\*768  
 Number of Colors: 16.2M  
 Brightness : 300cd/m<sup>2</sup>  
 Response time: 5ms  
 View angle: Horizontal:178°,Vertical:178°  
 Contrase ratio: 1000:1  
 Connector: VGAfor video signal (HDMI,DVI for optional)  
 USB (or RS232) for touch



## Model:HOP156

LCD Type:15.6" Active matrix TFT-LCD  
 Active Area(mm):344.16 (H) x 193.59 (V)  
 Resolution:1920 x1080@75Hz  
 Dot Pitch(mm):0.17925 (H) x 0.17925 (V)  
 Viewing angle (v/h):170°/160°(CR>10)  
 Contrast:1000:1  
 Luminance(cd/m<sup>2</sup>):300  
 Response Time:5ms  
 Support Color:16.2M colors  
 Video Input:VGA ,DVI or HDMI

## Model:701M

Panel size:7 inch TFT-LCD Touch Screen Monitor  
 Standard Resolution:800\*480  
 screen ratio:16:09  
 Number of Colors:16.2M  
 Brightness:300cd/m<sup>2</sup>  
 Response time:5ms  
 View angle:Horizontal:165°, Vertical:160°  
 Contrase ratio:1000:1  
 Connector:VGA for video signal (HDMI optional)



## Model:1701M

Panel size:17 inch TFT-LCD Touch Screen Monitor  
 Display ratio:4:3  
 Standard Resolution:1280\*1024  
 Number of Colors:16.7M  
 Brightness:350cd/m<sup>2</sup>  
 Response time:5ms  
 View angleHorizontal: 178°,Vertical:178°  
 Contrase ratio:1000/1  
 Video input format:(analog) RGB  
 Interface:VGAfor video signal (HDMI,DVI for optional)  
 USB (or RS232) for touch



## Model:1201M

Panel size:12 inch TFT-LCD Touch Screen Monitor  
 Display area:245\*285mm  
 Standard Resolution:1024\*768  
 Number of Colors:16.2M  
 Brightness:300cd/m<sup>2</sup>  
 Response time:5ms  
 View angle:Horizontal:176°, Vertical:170°  
 Contrase ratio:1000:1  
 Connector: VGA for video signal (HDMI, DVI for optional)  
 USB (or RS232) for touch



## Model:P215PM

Panel size:21.5" TFT-LCD Industrial Grade Touch Screen Monitor  
 Display ratio: 16:10  
 Standard Resolution: 1920\*1080/60HZ  
 Number of Colors: 16.7M  
 Brightness: 300cd/m<sup>2</sup>  
 Response time: 5ms  
 View angle: Horizontal:178°/ Vertical:178°  
 Contrase ratio:1000/1  
 Interface: VGA for video signal/HDMI, DVI optional



# LCD AD Display series

Model:HP1008

RAM:1GB

Internal memory :8GB

Operation system:Android 6.0

Touch screen:5-Point capacitive touch

Panel:10.1"LCD IPS panel

Resolution:1280\*800

Contrast ratio:800

Luminance:250cd/m2

Aspect Ratio:,16:10

CPU:Quad core cortex A7,1.3G

## SUPPORT



# LCD AD Display series



Panel	14" Innolux LED screen	Panel	15.6"LCD panel
Resolution	1920*1080	Resolution	1920*1080
Luminance	350cd/m <sup>2</sup>	Luminance	250cd/m <sup>2</sup>
Contrast	1000	Contrast ratio	500
Aspect Ratio	16: 9/ 309x174mm	Aspect Ratio	16: 9
SD Card slot	SD Card(Max 32GB)	Touch screen	10-Point capacitive touch
Mini HDMI	HDMI input	Rj45 with POE	Rj45
USB Host	USB Host 2.0	USB x 3	USB Host
Power jack	DC power input	Power jack	DC power input
AV	AV input	Card slo	SD card
Power consumption	12W	VESA	100*100mm



Panel	21.5"LCD full HD panel	Panel	32"LCD full HD IPS screen
Resolution	1920*1080	Resolution	1920*1080
Luminance	250cd/m <sup>2</sup>	Luminance	250cd/m <sup>2</sup>
Contrast	1000	Contrast ratio	3000
Aspect Ratio	16: 9	Aspect Ratio	16: 9
Touch	10-Point capacitive touch	Touch screen	10-Point capacitive touch
Active area	474.64(H)x 268.11 mm(V)	Active area	698.4(H)x392.85mm(V)
Card slot	Mini USB OTG	Card slot	SD,Support up to 32GB
USB Device	USB Host 2.0	USB Device	Mini USB OTG
USB Hostx3	AV input	USB Hostx2	USB Host 2.0
VESA	100X100mm	Wall mounting	VESA,100x100mm





10 inch  
CCTV Monitor  
(Model:H101MA)

## Features:

- EDP((original Panasonic EDP panel ), 1920\*1200 HD resolution.
- Built-in DVR, split 2 or 4 images effect.
- Customized touch function is available.
- Security System/Video SIR camera /Aerial HD equipment/Video display screen with rocker arm/USB media player/ Audio,video instant plug and play/Medical HD screen/Special screen for microscope/Monitor screen for industrial high-end equipment/High-end displayer for gaming/Player,aerial photography and model.

Size	10.1"EDP panel
Aspect ratio	16:10
Viewing area	21.8*14.8CM
Dot Pitch	0.264(H)×0.64(V)
Resolution	1920*1200
Contrast ratio	1000:1
Brightness	400cd/m <sup>2</sup>
Response time	<5ms
Viewing angle	178°/178°
Interface:VGA,BNC,HDMI,USB,AV,Audio input,Audio output,Power Jack	



7"CCTV monitor (H7708)

Display area: 15.3\*8.8CM  
Aspect ratio: 16:9  
Dot Pitch: 0.297(H)×0.297(V)  
Resolution: 1024\*600  
Contrast ratio: 500:1  
Brightness: 250cd/m<sup>2</sup>  
Response time: <8ms  
Viewing angle: 168°/168°  
Color: 16.7M

Interface: VGA/BNC/HDMI/AV/Power input



8"CCTV monitor (H8078)

Display area: 16.3\*12.3CM  
Aspect ratio: 4:3  
Dot Pitch: 0.297(H)×0.297(V)  
Resolution: 1024×768  
Contrast ratio: 500:1  
Brightness: 250cd/m<sup>2</sup>  
Response time: <12ms  
Viewing angle: 168°/168°  
Color: 16.7M

Interface: VGA/BNC/System/AV/Power input



8"HD CCTV monitor (HD08)

Display area: 16.3\*12.3CM  
Aspect ratio: 4:3  
Dot Pitch: 0.297(H)×0.297(V)  
Resolution: 1024×768  
Contrast ratio: 500:1  
Brightness: 450cd/m<sup>2</sup>  
Response time: 5ms  
Viewing angle: 178°/178°  
Color: 16.7M

Interface: VGA/BNC/HDMI/AV/Power input





17 inch  
Industrial Grade  
CCTV monitor  
(Model:H101MA)

Features:

- Green and energy efficient, Industrial metallic look, ultra-low power dissipation, 24 hours operating time.
- Security System/Video SIR camera /Aerial HD equipment/Video display screen with rocker arm/USB media player/ Audio,video instant plug and play/Medical HD screen/Special screen for microscope/Monitor screen for industrial high-end equipment/High-end displayer for gaming/Player,aeril photography and model.

Size	17"(high brightness,high resolution)
Display area	340mm(W)×272mm(H)
Aspect ratio	4:3
Dot Pitch	0.264mm×0.264mm(H,V)
Resolution	1280×1024
Contrast ratio	500:1
Brightness	450cd/m <sup>2</sup>
Response time	5ms
Viewing angle	178°/178°

Interface:VGA/BNC1/BNC2/BNC OUT/HDMI/YBPBR R/L/Audio input/Audio output



TOUCH ALL-IN-ONE PC SERIES



## Features:

- Supports 10 points touch for hand-writing and multi-point clicks.
- Flat structure&fine craft: Aluminium Alloy+Metal material frame without sharp edge+Wear-resisting and antiseptic baking technology.
- 1TB SATA hard drive
- Intel Conroe i7 Quad-Core, 4GHz
- 4GB DDR3L SDRAM system memory (expandable to 8GB)
- 10/100/1000Base-T Ethernet, 802.11b/g/n Wireless LAN



Model	HOP170-8
Series	Metal-cased openframe
LCD Type	17" TFT-LCD
Video Input	VGA and DVI , HDMI - optional
Active Area(mm)	339.8(H)×272.5(V)
Resolution	1280×1024@75Hz
Dot Pitch(mm)	0.264×0.264
Viewing angle (v/h)	176°/170°
Contrast	1000:1
Luminance(cd/m <sup>2</sup> )	H:176°V:170°
Response Time	5ms
Support Color	16.7M colors
Type	RESISTIVE Touch screens

### Model: HOP-DG2302IB3

Size:23.6"  
 CPU:Intel® Core™ i3-2310M  
 Chipset:HM65  
 Graphics:Intel HD 2500  
 Memory:4GB  
 SSD/HDD:120 GB SSD or 500GB HDD  
 Cache memory:3M  
 Base frequency:2.1GHz  
 LAN:1000Mbit LAN+wifi  
 Camera:0.3M Pixel  
 Interface:4x USB 2.0 Ports /1 x VGA Ports  
 1 x Headphone-out jack/1 x Microphone-in jack

### Model: HP215-E10-A01

Size: 21.5"  
 Display ratio: 16:09  
 Standard Resolution: 1920\*1080/60HZ  
 Number of Colors: 16.7M  
 Brightness: 350cd/m<sup>2</sup>  
 Response time: 5ms  
 View angle: 176°(H)/170°(V)  
 Contrase ratio: 1000/1  
 Touch model: Capacitive touch  
 Duration: 50000hours  
 touch validity: >1,000,000  
 Interface: VGA for video signal (HDMI, DVI for optional)

## Support interface(customizable):



HDMI



VGA



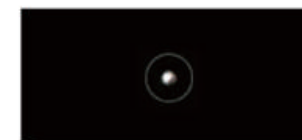
USB



AV



3.5mm耳机



DC电源



RS232串口



DVI

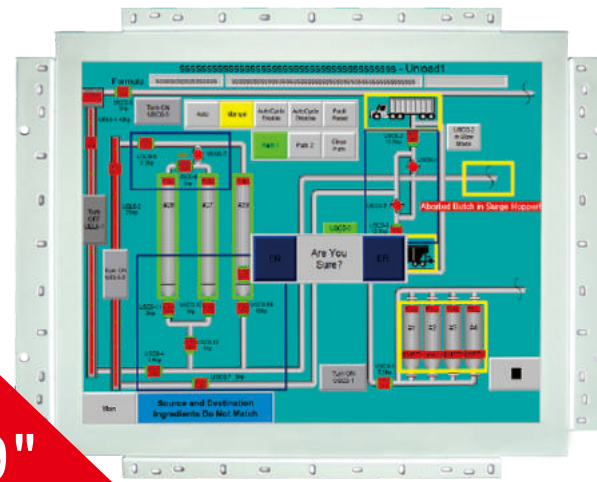
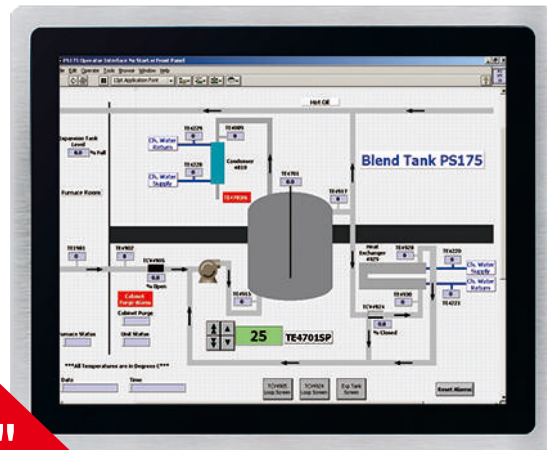


## Model:HOP150PC-8

Series: Water-proof and Open frame  
 LCD Type: 15" TFT-LCD  
 Video Input: VGA and DVI , HDMI - optional  
 Active Area(mm): 304.8(H)×228.7(V)  
 Resolution: 1024×768@75Hz  
 Dot Pitch(mm): 0.297×0.297  
 Viewing angle (v/h): 176°/170°  
 Contrast:1000:1  
 Luminance(cd/m<sup>2</sup>): 350, 1000cd/m<sup>2</sup> - optional  
 Response Time: 5ms  
 Support Color: 16.2M  
 Resolution: 10points touch

## HOP190W-8

Series: Metal-cased openframe  
 LCD Type: 19" 16:9 TFT-LCD  
 Video Input: VGA and DVI , HDMI - optional  
 Active Area(mm): 410(H)×255(V)  
 Resolution: 1440\*900  
 Dot Pitch(mm): 0.294×0.294  
 Viewing angle (v/h): 165°/160°  
 Contrast: 1000:1  
 Luminance(cd/m<sup>2</sup>): 400, 1000cd/m<sup>2</sup> - optional  
 Response Time(Rising/Falling): 5s/5s  
 Support Color: 16.7M colors  
 Touch System Interface: USB interface



## Model:HOP190I-8

Series: Metal-cased openframe  
 LCD Type: 19" TFT-LCD  
 Active Area(mm): 378.3(H)×303.0(V)  
 Resolution: 1280×1024@75Hz  
 Dot Pitch(mm): 0.294×0.294  
 Viewing angle (v/h): 176°/170°  
 Contrast: 1000:1  
 Luminance(cd/m<sup>2</sup>): 300  
 Response Time: 5ms  
 Support Color: 16.7M colors  
 Video Input: VGA and DVI , HDMI - optional  
 Touch Response time: 5ms  
 Type: Infrared (IR) touch screen

## HOP121PC-8

Series: Water-proof and Open frame  
 LCD Type: 12.1" TFT-LCD  
 Video Input: VGA and DVI , HDMI - optional  
 Active Area(mm): 246.0(H)×184.5(V)  
 Resolution: 1024\*768  
 Dot Pitch(mm): 0.3075×0.3075  
 Viewing angle (v/h): 165°/160°(CR>5)  
 Contrast: 1000:1  
 Luminance(cd/m<sup>2</sup>): 350, 1000cd/m<sup>2</sup> - optional  
 Response: 5ms  
 Support Color: 16.2M colors  
 Backlight MTBF(hr): 50000  
 Resolution: 10points touch



# Product Certification

